



# BCMTA Newsletter

**FEBRUARY 2010**

## Summary of Events Feb/March 2010

2/20 - E-mail/ Postmark Deadline  
for Student Day Performance  
Exams

2/27 Pompano Piano Competition

3/5 District IV Enrichment Day

3/13 & 14 Student Day  
Performance Evaluation Exams

3/20 & 21 Honors Recitals

[FOR COMPLETE CALEDAR  
LISTINGS CLICK HERE](#)

### Newsletter Highlights:

Musicthon	2
General Meeting Info.	3
News from Nova	4
Financial Report	5
Classifieds	6
District IV Enrichment Day	8
Miami Piano Festival	9



## *Broward County Music Teachers Association*

February, 2010

Dear Friends and Colleagues,  
Happy, busy February! As you are reading this, the final tally for our annual fundraiser, Musicthon is just in. We raised **\$10,232.53!** This was the most successful Musicthon in BCMTA history. Thank you to Wanda Wiranis, Annamarie Cockreham, Marie Maher and Sue Colvert for their tireless efforts on behalf of our organization for this event. Thank you to Dean Palmer at Grand Masters Pianos for the lovely instrument provided for the fundraiser. The three days of

Musicthon went smoothly and the shoppers at the Galleria Mall enjoyed a wonderful weekend of music. Musicians performing many instruments and vocalists, entertained friends, family and passers-by. Thank you to all teachers who participated in this worthwhile event. Twenty-six teachers participated with their studios. The studio of "Yours Truly" raised the most money. See the complete Musicthon round-up later in this newsletter.

Be sure to read about the District VI Enrichment Day on page 8 of this newsletter and make plans to attend. It is important for BCMT to show our support for Zelda Jensen, our new Dist VI President.

The next big event is the Pompano Piano Competition. The competition will take place all day Saturday, February 27, 2010 and will culminate with a televised evening performance of the finalists at the Emma Lou Olson Civic Center, located at 1801 NE 6 St. Pompano Beach, 33060. The evening concert will begin at 7:00 PM. We are proud to have Joanna Marie from WXEL as our emcee. Tune in to 90.7 at 12:00 PM on Thursday, February 25, as winners from the previous year will be performing live on the radio. The pianos will be provided by Steinway Piano Gallery along with a special scholarship award of \$500.00. The evening will end with a lovely reception following the performance of the finalists. Even if you are not submitting students for this event, please come out to the evening concert. There is no admission and all are welcome. I hope to see you there!

Musically yours,  
Mary Beth Purchase

## President's Message



## BCMTA Board & Committee Chairs • 2009-2011

### Executive Board

**President**  
Mary Beth Purchase

**1<sup>st</sup> VP, Programs**  
Jennifer Donelson

**2<sup>nd</sup> VP, Membership**  
Peggy Gallagher

**3<sup>rd</sup> VP, Student Activities**  
Maria Gomez  
Sue Colvert

**Treasurer**  
Annamarie Cockreham

**Recording Secretary**  
Barbara Kaskinen

**Corresponding Secretary**  
Barbara Schaap

**Directors**  
Wanda Wiranis  
Dianne Garvin  
Neil MacLaren

**Parliamentarian**  
Dianne Garvin

### Committee Chairs

**Pro-Tem Newsletter Editor**  
Barbara Muze for Nancy Kenney

**Musichthon**  
Wanda Wiranis  
OPEN

**Student Days**  
Sue Colvert  
Sandra Greenland  
Maria Gomez  
Dianne Garvin

**Honors Recital**  
Matthew Johnson (N) Barbara  
Schaap (S)

**Historian**  
OPEN

**Hospitality Chairman**  
OPEN

**E-mail Correspondence**  
Caroline Morgan

**Summer Camp Scholarships**  
Peggy Gallagher

**Composition Chairman**  
Marie Budinsky-Maher

**Competitions Chairman**  
Rosalie Gregory

**Yearbook Editor**  
Peggy Gallagher  
Sheri Garlock

**Referral Service**  
Nadine Cherna

**Audio & Video Librarian**  
Karola Zehme

**Greenspan & FSMTA President's  
Community Service Award**  
Joanna Greenspan-Medalie

**Publicity**  
Barbara Muze

**Website Editor**  
Barbara Muze

**Scholarship**  
Joanna Greenspan

**Scheduling**  
Dianne Garvin

Please contact BCMTA President, Mary Beth Purchase, if you would like to join a committee or serve on the board!

## MUSICHTON 2010 – A ROUSING SUCCESS

Galleria Mall - Fort Lauderdale, January 22, 23, 24

Twenty-six BCMTA teachers participated in this year's MUSICHTON and raised a total of **\$10,232.53!**

The top three studios that raised the most money are:

- Mary Beth Purchase with \$1,098.00 - **40 students participating**
- Barbara Kaskinen with \$748.75 - **24 students participating**
- Sue Colvert with \$726.00 - **26 students participating**

Congratulations to Barbara Kaskinen's student, **Meagan Bentley** for raising the highest amount - \$360.00! For her hard work she has been awarded a \$50.00 Student Award that will be credited to the studio of Barbara Kaskinen and can be used by Meagan for new music or lessons.

Musichthon expenses were **\$1,892.83** and covered T-shirts, posters for the mall, and programs.

The Broward County Music Teachers Association will donate **\$2,000.00** to Patrons of Exceptional Artists, Inc., the non-profit arts organization that presents the Miami International Piano Festival.

## THE NEXT GENERAL MEETING

### Mark your calendar now and plan to attend!

**April 9, 2010** - 5<sup>TH</sup> General Meeting. **Judith Burganger** – Performance Practice in the Studio - Tips for teaching and discussing ornaments and other historically-informed techniques to keyboard students.

**NOTE:** At the most recent BCMTA board meeting on February 5th, the directors established a committee to discuss and determine the nature of future General Meetings - Lack of attendance/interest being the main reason for the formation of this committee. Look for a possible membership survey where you will have the opportunity to share your opinions on how best BCMTA can serve its members through regularly scheduled meetings. In the meantime, any thoughts and/or suggestions regarding general meetings and teacher enrichment programs can be sent in confidence to: [bmuze@bellsouth.net](mailto:bmuze@bellsouth.net)

BCMTA Member, **Jennifer Donelson, D.M.A.**, assistant professor in the Farquhar College of Arts and Sciences Division of Performing and Visual Arts, will present a musical look at noted piano works of 20<sup>th</sup> Century composers with “*An Excursion through the Americas: Modern Works for the Piano by Composers North and South.*” The recital, part of the college’s Faculty Series, will take place on Tuesday, March 16, 2010, at 7:30 p.m. in the college’s Performing and Visual Arts Wing of the Don Taft University Center, room 309.

*An Excursion through the Americas* will highlight piano works by composers from the United States, Mexico, Argentina, and Brazil. The program will include performances such as Alberto Ginastera's *Piano Sonata No. 1* and the rarely heard solo piano version of George Gershwin's *Rhapsody in Blue*.

This event is free and open to the NSU community; tickets *are not* required for admission. For more information, contact [Jennifer Donelson](mailto:jennifer.donelson@nova.edu), D.M.A., in the college’s Division of Performing and Visual Arts, at (954) 262-7610.

For a schedule of upcoming events presented by the college’s Division of Performing and Visual Arts, visit [www.fcas.nova.edu/performingarts/schedule.cfm](http://www.fcas.nova.edu/performingarts/schedule.cfm).

### REMINDERS!

- 1) The postmark deadline for **Dist. VI Concerto Competition** is February 27th - firm & fixed! no exceptions. Teachers must download forms from [www.fmta.org](http://www.fmta.org)
  - a) Student Activities
  - b) Comp. Event Forms

**IMPORTANT!** Print ALL forms listed under DISTRICT Concerto Comp. Forms (NOT State)  
There are six forms to be printed. Incomplete applications cannot be accepted. No forms will be mailed out.
- 2) All members of FSMTA are encouraged to submit applications for their students who are presently a member of the ninth grade class for the 2010 Local Presidents FSMTA **Community Service Award** and for their students who are presently a member of the twelfth grade class for the 2010 Leroy Greenspan Memorial FSMTA Community Service Award. The applications are due to the president of the local MTA or High School Liaison Chairman by March 1, 2010. For more information visit the BCMTA website [http://www.bcmta.org/public\\_html/Competitions/Community%20award.html](http://www.bcmta.org/public_html/Competitions/Community%20award.html)

### YEARBOOKS

If you still have not received a copy of the 2009/2010 yearbook, you can send a check for \$2.85 to Barbara Schaap, 7024 NW 101 Ave. Tamarac, FL 33321 and she will mail you the current edition.

There is no charge to stop by her home in Tamarac and pick up your copy. Please call first.

Barbara Schaap

954-597-1856

[barbaraphil2004@yahoo.com](mailto:barbaraphil2004@yahoo.com)

## NEWS FROM NOVA

**Nova Southeastern University's Farquhar College of Arts and Sciences** is pleased to announce Division of Performing and Visual Arts grants to support talented performing and visual arts students. The division offers a talent-based grant to students pursuing a B.A. in art, dance, music, or theatre or who participate in the Bossa Nova Chorale, NSU Sharkestra Pep Band or orchestra programs. This grant, awarded on a yearly basis, is available to current undergraduate students, incoming freshmen, and transfer students.

Auditions for grants for the 2010-2011 academic year are on February 20th and March 20th, 2010.

To apply for the Performing and Visual Arts Grant, please complete the form available at:

<http://fcas.nova.edu/performingarts/grantform.cfm>

**The Performing and Visual Arts Division at Nova Southeastern University** is accepting applications for one slot in a master class with Dr. Richard Fountain to be held on **Monday, Feb. 22<sup>nd</sup> at 5:00 p.m. on the NSU campus**. The slot is 15 minutes long and is available to piano soloists, chamber ensembles which include the piano, or accompanists with a soloist.

To apply, please send the following information to Dr. Jennifer Donelson, Assistant Professor of Piano at NSU ([jd1120@nova.edu](mailto:jd1120@nova.edu)) – **Application deadline: Monday, Feb. 15<sup>th</sup>**.

Student's name

Number of years of study

A short biography

A representative list of repertoire played within the last year

The selection proposed for inclusion in the master class

Dr. Richard Fountain is Assistant Professor of Collaborative Piano at Wayland Baptist University in Plainview, TX, where he teaches applied piano and accompanying as well as collaborating with choral ensembles and student and faculty soloists. Fountain received his Doctor of Musical Arts degree in Piano Performance from the University of Nebraska-Lincoln, studying with internationally celebrated pianist Paul Barnes. He has been a soloist with the Marion Philharmonic Orchestra, the UNL Symphony Orchestra and performed Liszt's *Totentanz* with Lincoln's Symphony Orchestra in Lincoln, NE during the 2008-2009 season. Dr. Fountain has held the position of Principal Keyboard in Lincoln's Symphony Orchestra since the fall of 2006, and has also held the position of Principal Keyboard with the Lubbock Symphony Orchestra since the fall of 2008.

An accomplished collaborative pianist, Dr. Fountain has worked with a wide variety of vocal and instrumental soloists, as well as several large choral ensembles. He was the principal rehearsal and performance pianist for the world premiere of the musical *Broadcast*, by Scott Murphy and Nathan Christensen. Dr. Fountain has recently developed an interest in early pianos, and has studied fortepiano with Dr. Ann Chang-Barnes at UNL and with Malcolm Bilson at Cornell University. He remains an ardent student of historical performance practice on both period and modern instruments.

**BCMTA FINANCIAL REPORT**

Listed below is the second quarterly report for fiscal year 2009-2010.  
 As requested by the Board, BCMTA financial reports will be listed in the newsletter every quarter.  
 Any questions or clarifications in regards to BCMTA financials can be emailed  
 to [ascjc@bellsouth.net](mailto:ascjc@bellsouth.net).

Category Description	10/1/2009- 10/31/2009	11/1/2009- 11/30/2009	12/1/2009- 12/31/2009	OVERALL TOTAL
<b>INCOME</b>				
Advertising	150.00	140.00	0.00	290.00
Dues	75.00	0.00	15.00	90.00
<b>TOTAL INCOME</b>	<b>225.00</b>	<b>140.00</b>	<b>15.00</b>	<b>380.00</b>
<b>EXPENSES</b>				
Charity	50.00	0.00	0.00	50.00
Donation	210.00	0.00	100.00	310.00
Incorporation	0.00	10.00	0.00	10.00
Newsletter	19.44	0.00	6.51	25.95
Programs	350.00	0.00	0.00	350.00
Student Day	-45.00	0.00	0.00	-45.00
Treasurer	0.00	0.00	14.95	14.95
Website	500.00	0.00	41.99	541.99
Year Book	447.47	0.00	0.00	447.47
<b>TOTAL EXPENSES</b>	<b>1,531.91</b>	<b>10.00</b>	<b>163.45</b>	<b>1,705.36</b>
<b>OVERALL TOTAL</b>	<b>-1,306.91</b>	<b>130.00</b>	<b>-148.45</b>	<b>-1,325.36</b>

Our current checking balance is \$15,490.04 and the Memorial Scholarship Fund is \$1,546.34

2010 MTNA National Conference  
 CLICK LINK for details  
<http://members.mtna.org/Conference2010/index.html>

Advertisement

## **Beautiful Handmade Adjustable Piano Footrest.**

**Personalized with your own name plaque!  
Put your young pianist in the correct position from the start.**

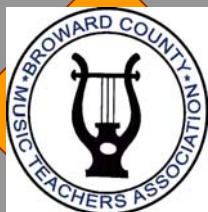


**Five adjustable levels. No more dangling, kicking legs. Every piano student whose feet do not touch the floor should own this! These are handmade, excellent quality hard-wood birch. Why do we make them? Our son started piano lessons and we looked everywhere for a footrest that was of solid construction and looked nice with our piano. What we found was a pine footrest for twice the cost that barely fit his feet! We set to task hand crafting something sturdy yet beautiful that would last generations. And best of all—they can be personalized with your name!**

**MADE BY HAND OF BIRCH AND OAK HARDWOODS  
COMES IN 5 DIFFERENT SHADES OF STAIN:  
MAHOGANY, EBONY, PINE, NATURAL, WALNUT.  
\$90 includes personalization. Pickup in Davie, Florida.  
Please add \$10 if you would like this shipped.**

**Please contact me for more information!**

**[grahamharvey@comcast.net](mailto:grahamharvey@comcast.net) 954-600-6858**



Member of  
MTNA & FSMTA

Broward County Music  
Teachers Association

Pro-Tem Newsletter  
Editor

Barbara Muze

E-mail:

[bmuze@bellsouth.net](mailto:bmuze@bellsouth.net)

## For Sale

*Classified Ads, Business Cards, and Larger Ads are all welcome in the BCMTA Newsletter!*

*This publication reaches over 100 teachers & musicians by mailing list and is available online at [BCMTA.org](http://BCMTA.org).*

Please contact Barbara Muze at [bmuze@bellsouth.net](mailto:bmuze@bellsouth.net) for additional information. Thank you!

## Advertising Rates:

BCMTA Member Prices  
(Non-members add \$10)

\$15 – Classified or  
Business Card

\$20 – 1/4 Page

\$25 – 1/2 Page

\$30 – Full Page

• ALL ADS RUN FOR 3 ISSUES •

PLEASE MAIL CHECKS TO:

BARBARA MUZE

2030 NW 33<sup>RD</sup> COURT

OAKLAND PARK, FL 33309

## CLASSIFIEDS

FOR SALE: Walnut 5 ft. Baldwin Baby Grand piano. Please call Gail Smith, (954) 491-6683

**Please Note:** Julie Cleveland's phone number is listed incorrectly in the BCMTA Yearbook. She can be contacted at:

[clevelandpianostudio](http://www.clevelandpianostudio.com)

<http://www.clevelandpianostudio.com>

[juliecleveland@mac.com](mailto:juliecleveland@mac.com)

cell: 561.376.5980 (this number does not accept texts)

## Dr. Rita Hutcherson Memorial Scholarship Fund

A scholarship fund has begun in the memory of Dr. Hutcherson. Please mail donations to BCMTA Treasurer, Annamarie Cockreham, 4231 SW 54th Avenue Davie, FL 33314 Phone:954-327-0979

Checks are payable to BCMTA.  
Thank you.

[Click Here](#)  
to see how the fund has grown

## LAST CALL

The Broward County Music Teachers Association **NEEDS YOUR HELP!** We would like to create a memorial page for Barry Weinberg on our BCMTA website and would like to include any thoughts, memories, and/or anecdotes you would like to share. Please send these to [bmuze@bellsouth.net](mailto:bmuze@bellsouth.net) for inclusion on the webpage. Comments can be posted anonymously, but we need content to make this page possible.

## *A ♪ from Newsletter Editor...*

**Next Deadline: March 7, 2010**

Teacher news, event information, yearbook updates, student news, & advertisements are all welcome! Advertising checks are payable to BCMTA & can be sent to Barbara Muze: [bmuze@bellsouth.net](mailto:bmuze@bellsouth.net)

Not all important announcements may fit the newsletter schedule. If you have something that needs to promptly reach BCMTA members, please e-mail Mary Beth Purchase. Announcements will then be distributed by E-mail Correspondent, Carolyn Morgan.

## GO GREEN!

Please do not print out this interactive Newsletter unless you really need to.

Either save it on your computer or visit the website,

[www.bcmta.org](http://www.bcmta.org) where you can find past issues dating back to 2007!

## *District IV Enrichment Day*

**DATE:** March 5, 2010  
**TIME:** 10:00 am until 12:30 pm.  
**FREE** - Lunch will be provided  
**PLACE:** Steinway Piano Gallery  
4104 Ponce de Leon Blvd., Coral Gables FL 33146

AN INFORMATIVE MORNING AND GREAT WAY TO MEET AND NETWORK WITH  
TEACHERS FROM MIAMI-DADE AND PALM BEACH COUNTIES.

(Please send an e-mail to [bmuze@bellsouth.net](mailto:bmuze@bellsouth.net) if you are willing to drive and/or need to carpool)

### **PROGRAM:**

Kirk Whipple & Marilyn Morales, Duo Pianists and Composers will present a two and a half hour performance and workshop for music educators. The duo will perform selections for solo, duet and two pianos from their extensive repertoire of traditional and original works. The duo plans to present the following and other topics of interest.

### Reaching Children in the Modern Age

In a culture where classical music is competing with an increasingly disparate society, what can serious educators do to foster interest in music amongst children? The duo have extensive experience presenting concerts in schools and will talk about their challenges and success stories.

### The Myth of “Perfect Pitch” and How to Get “It.”

Whipple wrote a series of articles dedicated to the subject of tonal memory, commonly referred to as “perfect pitch.” The entire series is available at the following link:

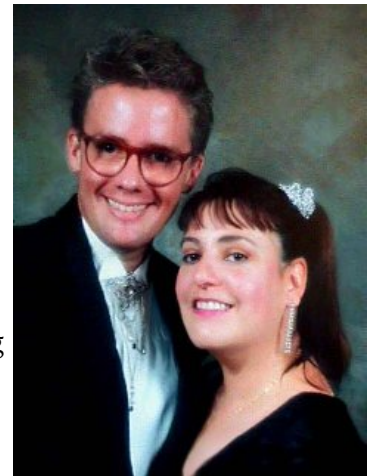
[www.unconservatory.org/perfect\\_pitch](http://www.unconservatory.org/perfect_pitch)

### The Artist’s Life – or “Reality 101”

Students work very hard for years to attain a professional level of musicianship, at which point the big question is usually, “What now?” Many serious music students give up when faced with the challenge of making a life as a serious musician. The duo will offer insight into their resources for pre-professional musicians.

### Q & A

Ask the duo anything about their lives as touring concert artists, composers, arrangers, educators, festival and concert producers, record producers.



### Links to explore from the Whipple – Morales Piano Duo:

[www.kennedy-center.org/programs/millennium/artist\\_detail.cfm?artist\\_id=KIRKWHIPPL](http://www.kennedy-center.org/programs/millennium/artist_detail.cfm?artist_id=KIRKWHIPPL)

1-hour live concert recorded at The Kennedy Center Millennium Stage. Serious works are in the first half, lighter works towards the end of the concert.

[www.cranberrycoastconcerts.com](http://www.cranberrycoastconcerts.com)

The web site for the annual summer festival produced by the duo. Season 5 will take place in 2010.

[www.myspace.com/88wm88](http://www.myspace.com/88wm88)

Whipple & Morales myspace page with some musical excerpts.

[www.myspace.com/ufooriginal](http://www.myspace.com/ufooriginal)

Myspace page for The Unconservatory Festival Orchestra, a.k.a. The UFO. There is a 10-minute video here of the duo performing Bach with chamber orchestra – and more coming soon on this site.

[www.whipmo.com](http://www.whipmo.com)

Under construction. This is the new publishing site for the duo. They plan to promote their original recordings, scores and other services here.

[www.unconservatory.org](http://www.unconservatory.org)

The educational site of the duo’s non-profit organization. Many of the pages are being updated, but there is a great deal of educational content that teachers may access. Info for the “teachers only” sections: User ID = teacher Password = oboe

Special Ticket Offer for all BCMTA Teachers, Students and Parents!  
PIANO RECITALS AT THE BROWARD CENTER FOR THE PERFORMING ARTS



## Master Series March 7, 8, 9, 2010

Broward Center for the Performing Arts, Fort Lauderdale, Florida  
Amaturo Theatre



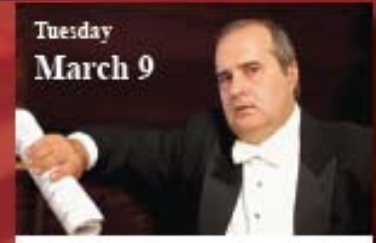
Sunday  
March 7

*Ilya Itin* (Russia)  
RUSSIAN MUSIC MARATHON!  
3:00 p.m.  
PROKOFIEV  
Peter & the Wolf  
(Narrated by Martin Bookspan)  
Sonatas No. 7 & 8  
("War Sonatas")  
8:00 p.m.  
RACHMANINOFF  
Prelude Op. 3 No. 2  
10 Preludes Op. 23  
13 Preludes Op. 32



Monday  
March 8

*Gulsin Onay* (Turkey)  
8:00 p.m.  
BEETHOVEN  
Sonata in Op.27, No. 2  
("Moonlight")  
BARTOK  
Sketches Op.9b  
CHOPIN  
Andante Spianato &  
Grand Polonaise  
Sonata in B minor, Op.58



Tuesday  
March 9

*Jorge Luis Prats* (Cuba)  
8:00 p.m.  
SCHUMANN  
Symphonic Etudes  
ALBENIZ "Iberia"  
El Corpus en Sevilla  
Malaga- Jerez  
SCHUBERT  
'Grazer Fantasie' D. 60  
'Kupelwieser Walzer'  
LISZT 'Soirees de Vienne':  
Valse-Caprice d'apres Schubert  
STRAUSS/SCHULZ-EVLER  
Beautiful Blue Danube

Tickets only \$5!

Tickets available on a first come, first served basis. Please RSVP to:

[Barbara@miamipianofest.com](mailto:Barbara@miamipianofest.com)

no later than March 3<sup>rd</sup>.

Tickets can be picked up and paid for at the Broward Center Box Office.

[www.miamipianofest.com](http://www.miamipianofest.com)